

Rhino3D: Default Template

Description

Rhino3D: You always start with wrong model units? You can fix this in a second! Here's how to set your favorite startup template as default. Stay with me ...

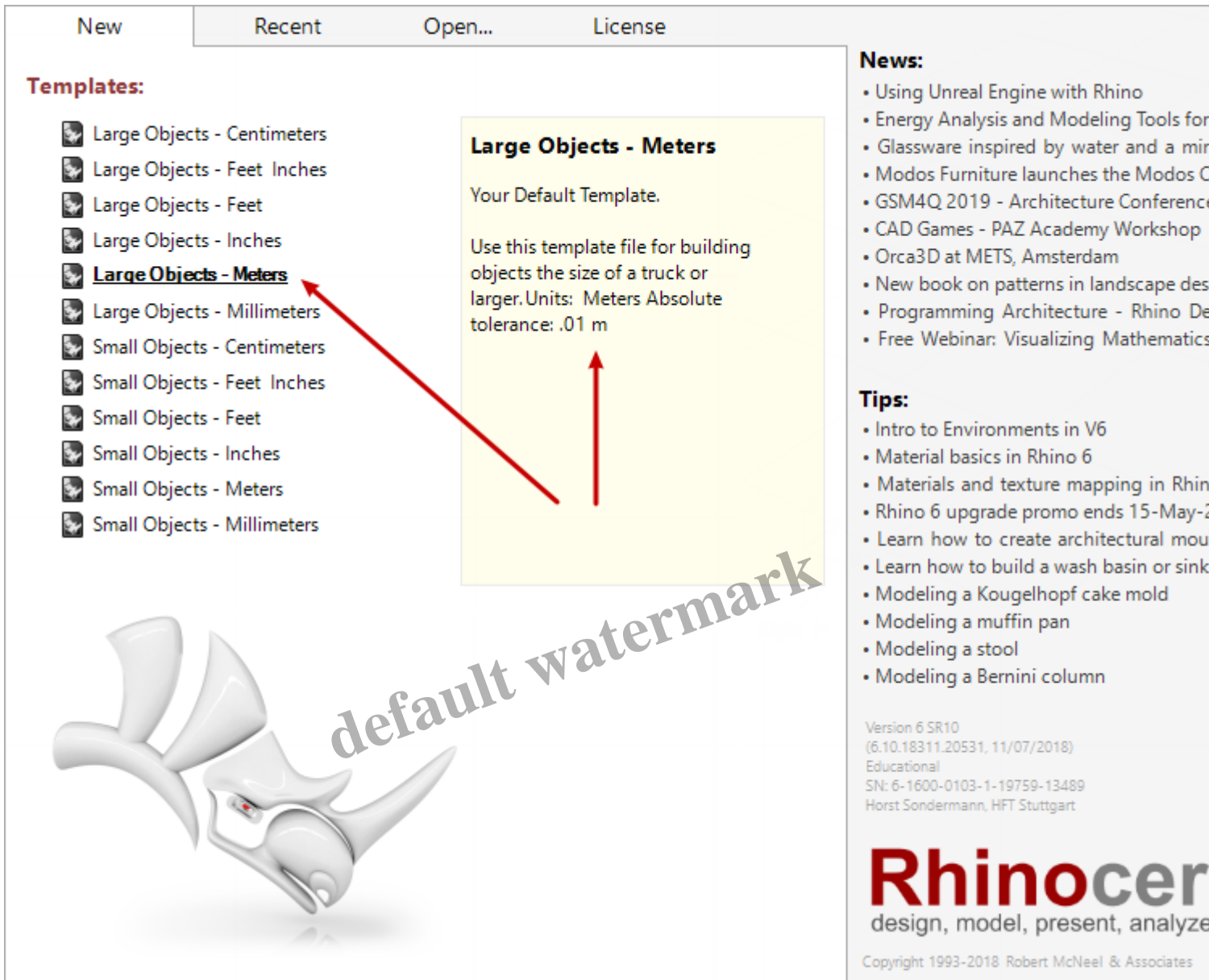
Read the [Rhino3D manual](#): There is help, too. Here's mine:

- [Rhino3D Template: Units and Grid](#)
- [Template Choice](#)
- [Startup Template Default](#)
- [Your Custom Template](#)

If you're more into Grasshopper, check [this](#).

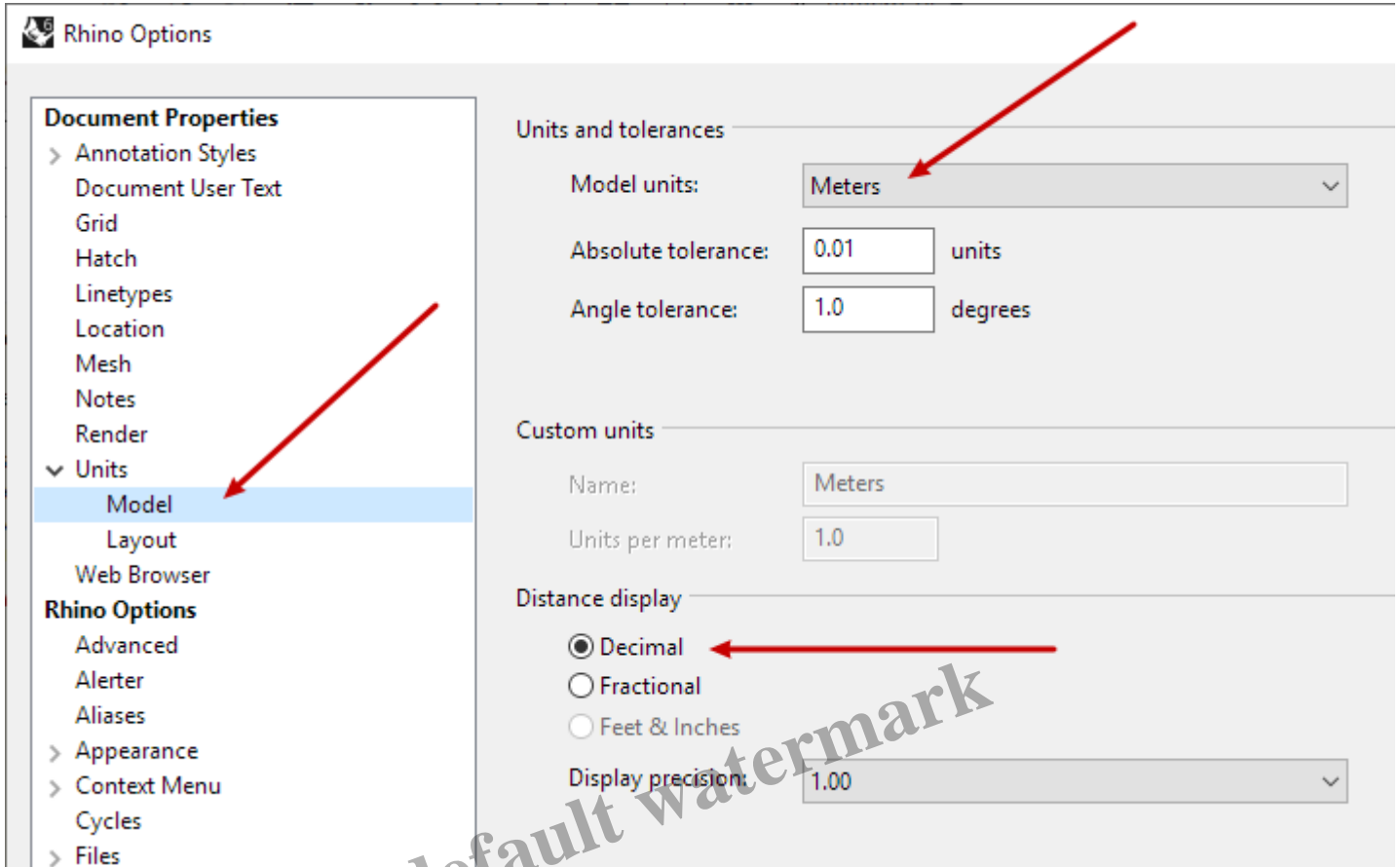
Rhino3D Template: Units and Grid ≤

When starting up, Rhino3D offers you a choice which *template* file to use. They differ mainly in the model units they are set to:



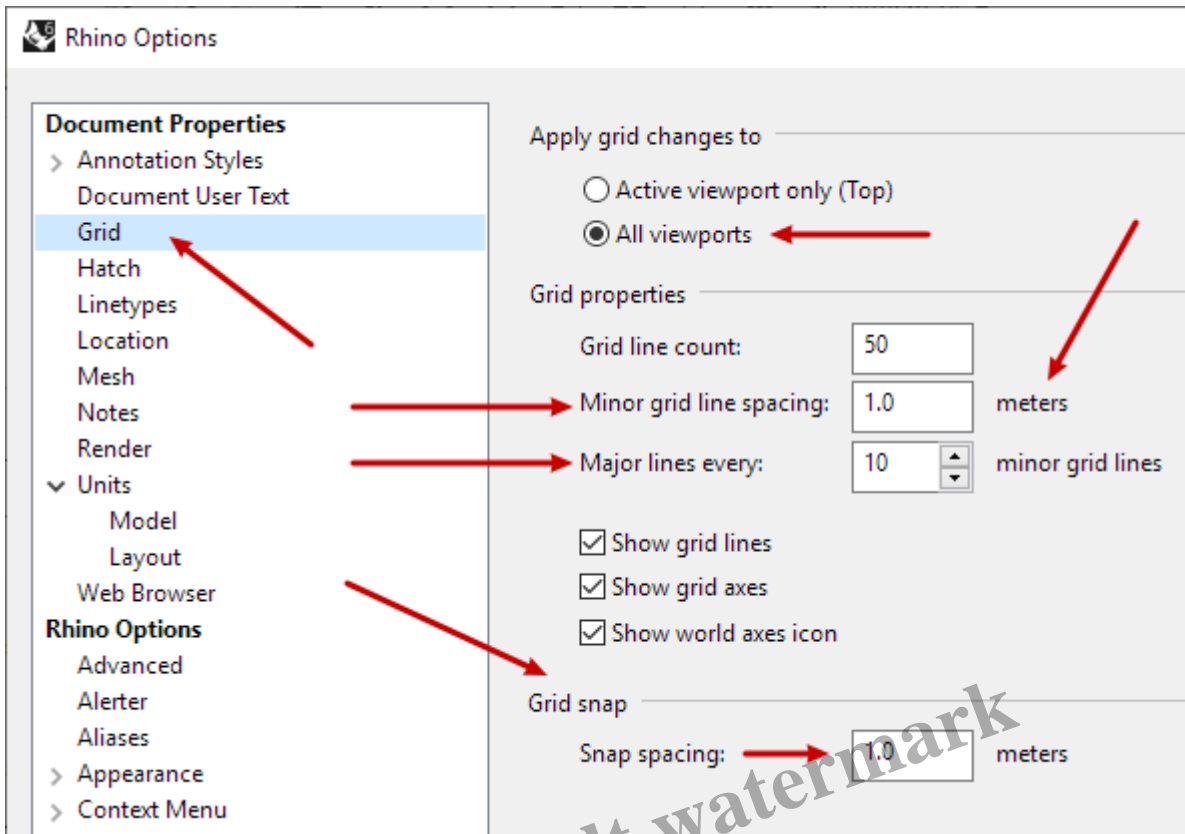
Irritably, although Rhino3D offers you template choice it will *simultaneously open one on its own*. So you are tempted to start working in this new file without checking whether the units suit you.

If you check *Options – Document Properties – Units* you see something like this:



(How to open *Options*? Type *Options* in the *command prompt* – that’s the *Rhino3d* way. Or: *Tools* menu – *Options*. Or: cogwheel icon in *Standard toolbar*.)

Grid lines and *snapping* will correspond:



Template Choices <

Of course in a running project you can always change the units to your like. But unquestionably, this is better managed via a template.

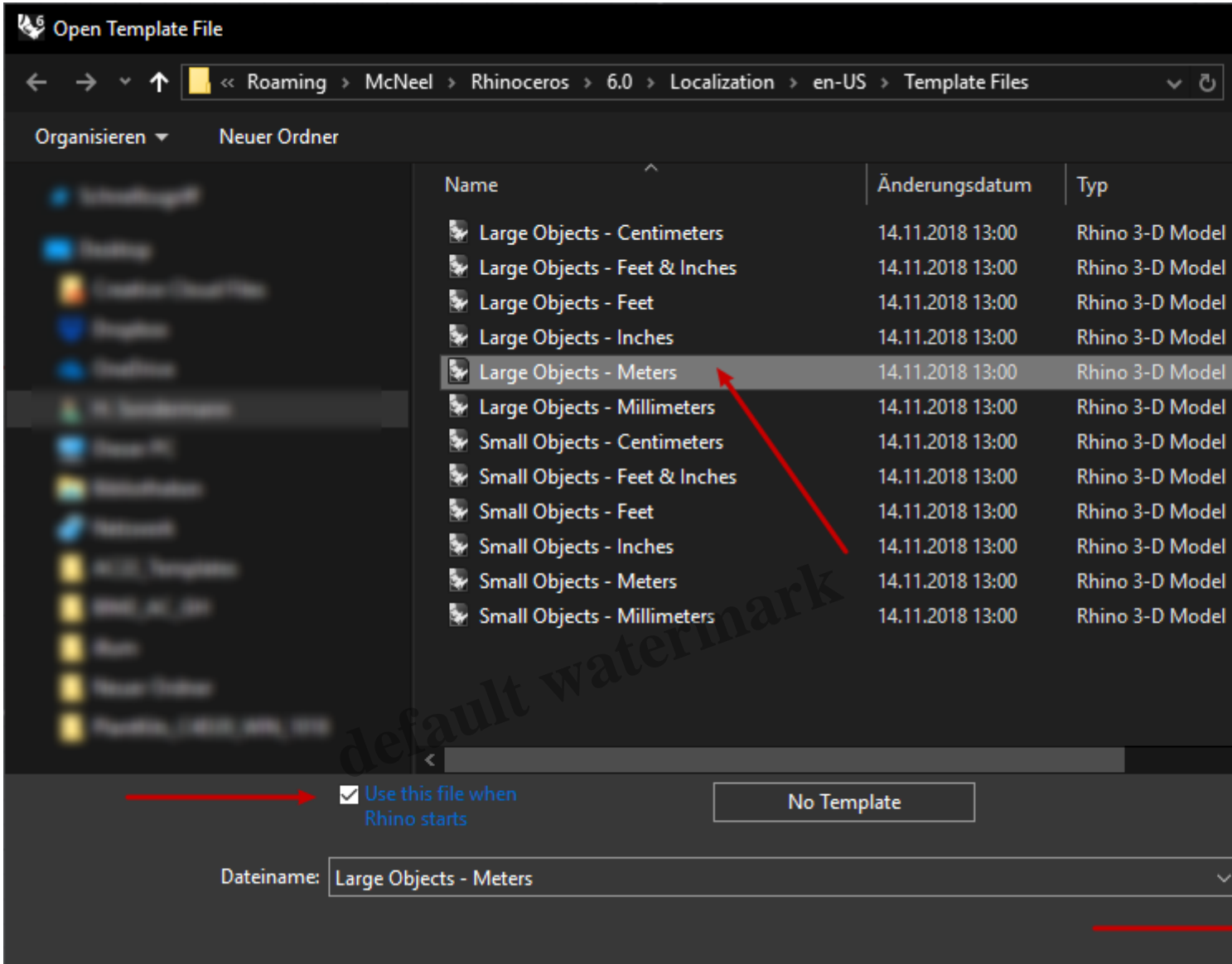
Your choices?

- When Rhino3d is running and you've already started working check and change units and grid settings in Rhino3D *Options*.
- When Rhino3D is running and you have not started working yet, choose *File – New* and choose a suitable template.
- You set one template as default and this will open whenever you start Rhino3D.

Startup Template Default <

So, when you find yourself working with the same set of units and grid spacing over and over again: Set up or use a *template* that opens by *default*.

Let's say as an architect, you always want to work with the template *Large Objects – Meters*. Choose *File – New*:



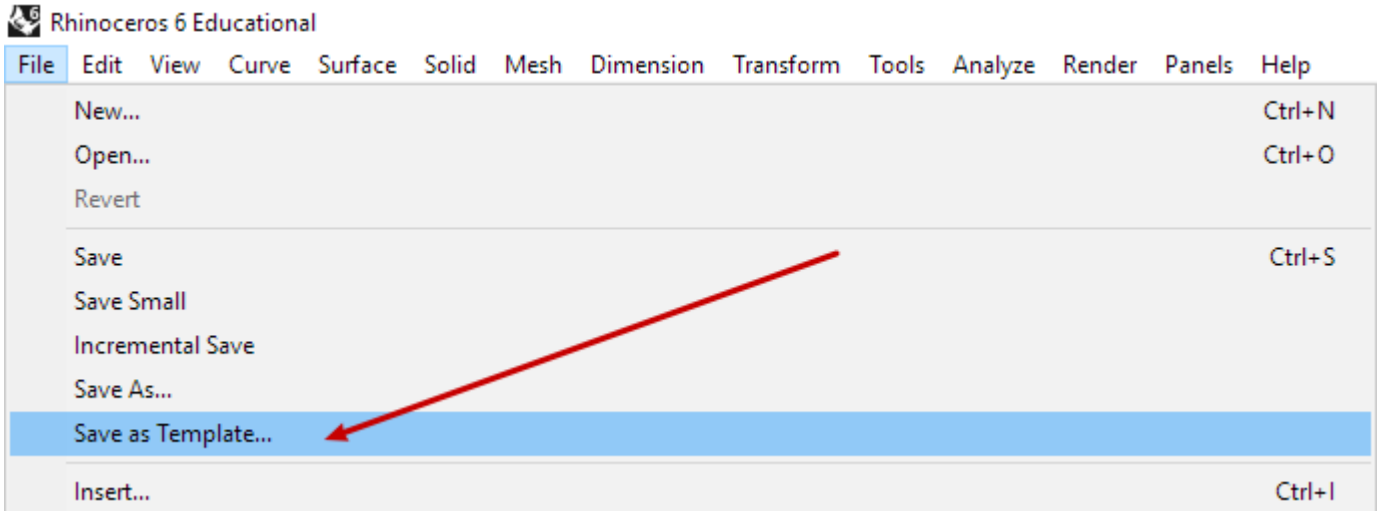
A list of template files appears. Pick the right one (*Large Object – Meters*). Now before you hit *Open* be sure to check *Use this file when Rhino starts*. (By some arcane reason, this option is rather hard to spot.)

Now you may open this template, but as you checked the startup option it will also show up *everytime* Rhino3d starts.

Your Custom Template <

Just so you know: Besides *units* and *grid* settings you can bake a lot more things into a template file. Just open up the your favorite Rhino3D template and change things to your like (e.g. *layers settings*).

Then choose *File – Save as Template ...* :



You're done, you got your own template.

Roundup

Be aware that even without you knowing Rhino3D choses a template for you. But you can:

- Get control by opening the right template.
- Get more control by defining your favorite template as startup default.
- And streamline your workflow by designing your own template.

Again, feel free to check McNeel's [support pages](#) and also my [Grasshopper Intro](#).

[© 2018 / Horst Sondermann / All Rights reserved](#)

Category

1. Rhino/Grasshopper

Tags

1. User Interface

Date Created

November 2018

Author

hsondermanncom